



DESIGNED BY IDIL SINDIR

2020 Fusion Live

INSTALLATION GUIDE

# Index

|                    |   |
|--------------------|---|
| Quick setup        | 3 |
| Advanced setup     | 4 |
| Using the software | 6 |

## Before you start.

- ⚙ Please take time to read these instructions before installing 2020 Fusion Live.
- ⚙ Check out our [System Recommendations](#).

[2020spaces.com/2020fusionlive](https://2020spaces.com/2020fusionlive)



DESIGNED BY KATIE FRANCES

# Quick setup

Setup for new installations, where everything is to be installed on a single computer.

## Installing the software

1. Start the .exe installer program
2. Accept the License Agreement
3. Enter your user information
4. Select **Server and Client Setup**
5. Select **Create a new database**
6. Click **Next** to continue installation
7. Finish!

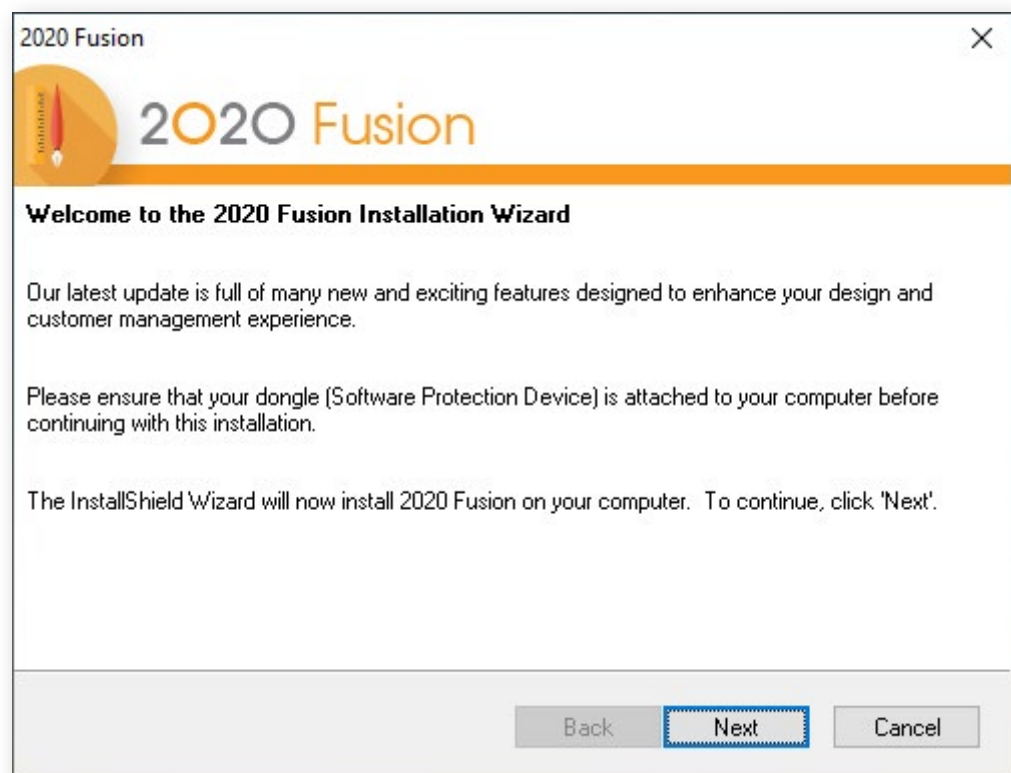
## Using the software

1. Open 2020 Fusion Live
2. Sign in using your 2020 Account
3. Log into 2020 Connect with the following:  
**ID:** admin  
**Password:** admin
4. Click **Yes** to associate your 2020 Account and 2020 Connect credentials
5. You're all set!

# Advanced setup

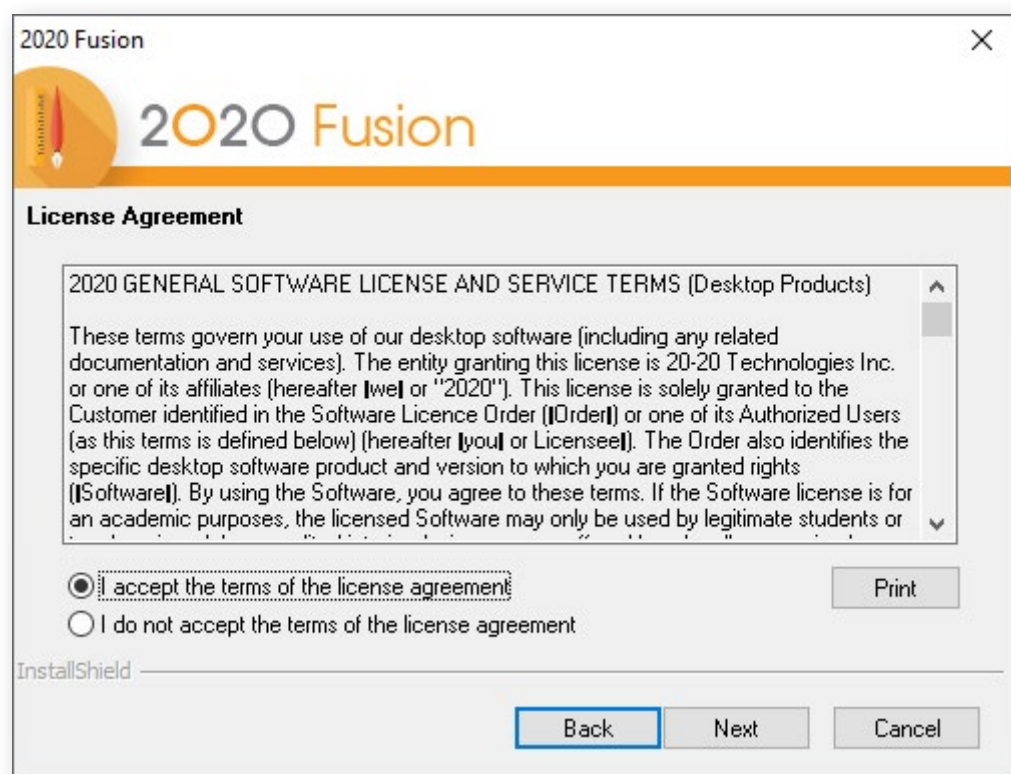
## STEP 1

Start the .exe installer program. The welcome screen appears. Click **Next**.



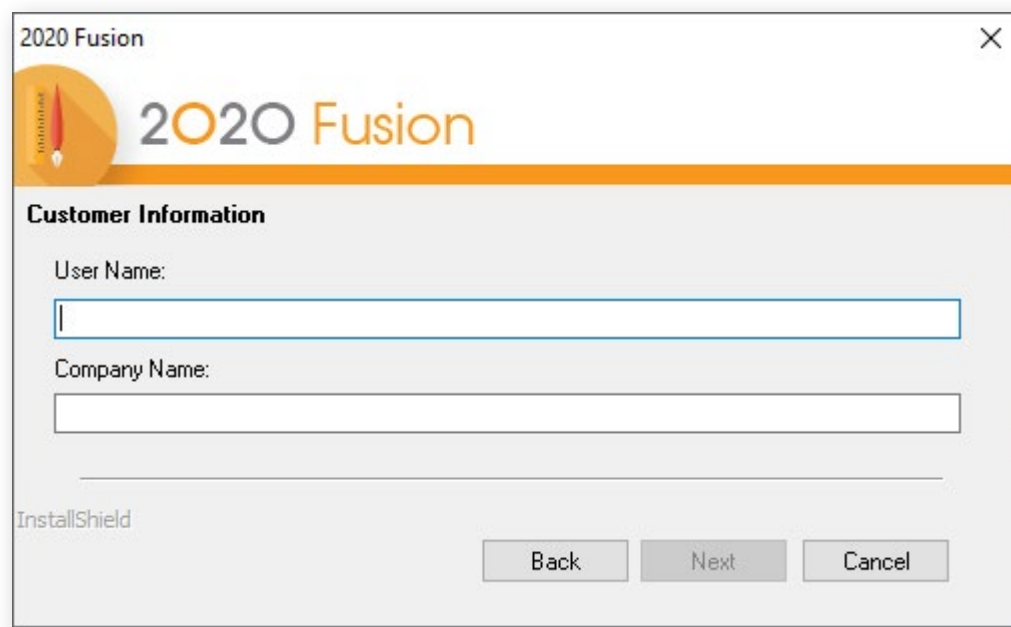
## STEP 2

Read the License Agreement. To agree to the agreement and continue installation, select "I accept the terms..." and click **Next**.



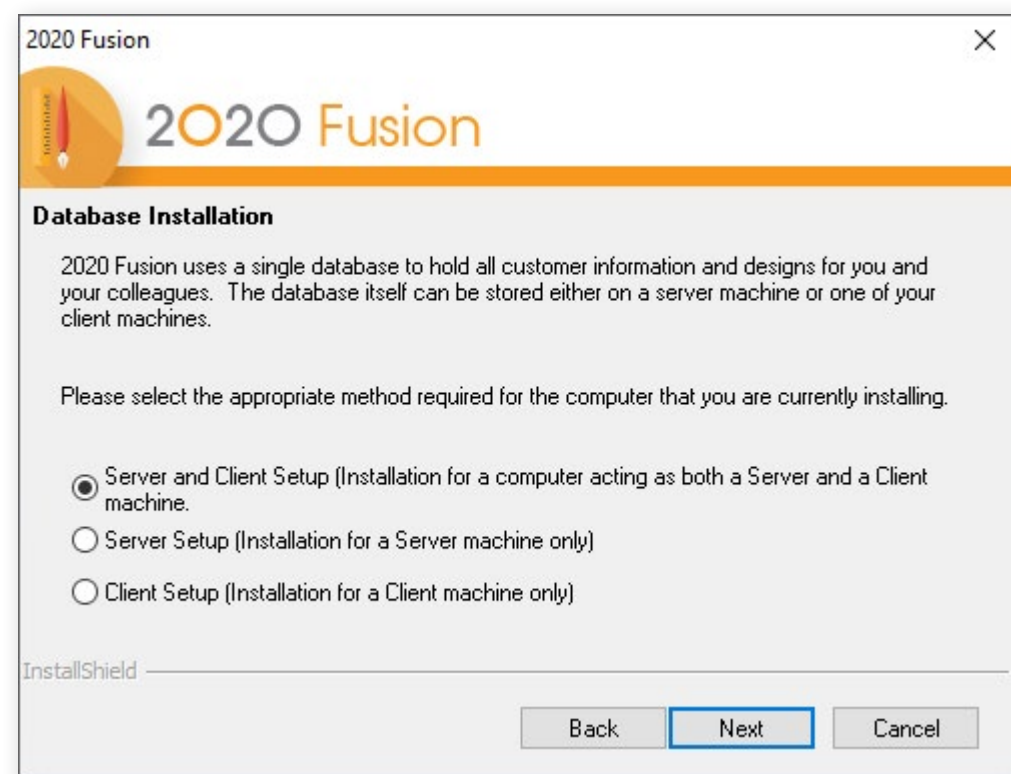
## STEP 3

Enter your user information and click **Next**.



## STEP 4

See the next page to determine which type of installation is required.



# Advanced setup

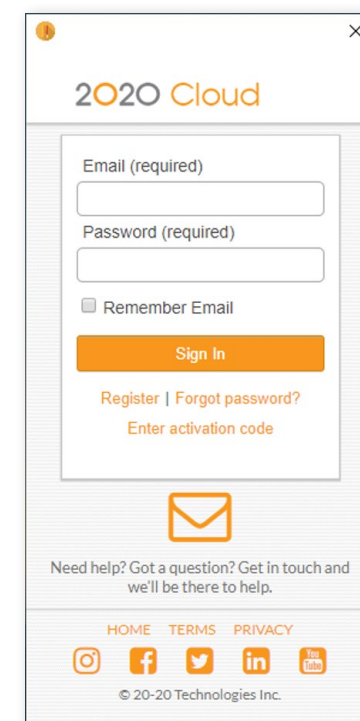
|               | Option A: Server & Client  | Option B: Server Setup  | Option C: Client/Network   |
|---------------|--|---|--|
|               | <p><b>USING AN EXISTING DATABASE*</b></p> <p>This method installs all of the software, including the database.</p> | <p>This method installs the database on a target machine (server). Use when several computers are sharing designs on a network.</p> | <p>This method installs all software except the database on a target machine (client).</p>                               |
| <b>STEP 5</b> | Select <b>Server and Client Setup</b> and click <b>Next</b> .  | Select <b>Server Setup</b> and click <b>Next</b> .  | Select <b>Client Setup</b> and click <b>Next</b> .   |
| <b>STEP 6</b> | Select <b>Use an existing database</b> and click <b>Next</b> .   | Select <b>Create a new database</b> and click <b>Next</b> .   | Select <b>Browse</b> and select the folder containing the database. Select <b>Master.connect</b> and click <b>Open</b> . |
| <b>STEP 7</b> | Click <b>Next</b> until you reach the last screen and click <b>Finish</b> .  |   |  |

\*If this is a new installation, then please follow the Quick Setup guide on page 4.

# Using the software

## STEP 1

Sign in using your 2020 Account  
(This is the same account you used during the purchasing process).

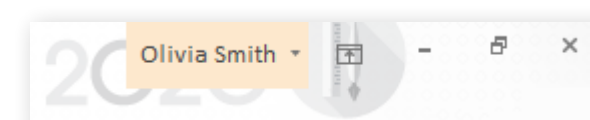
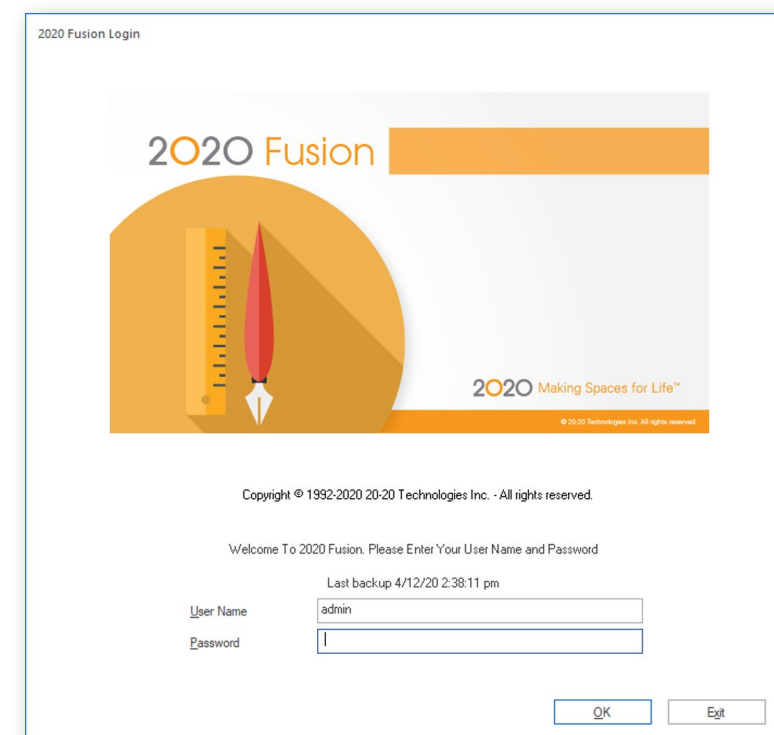


## STEP 2

Enter the Login ("admin") and password ("admin") in the 2020 Connect Login screen.

Click **Yes** to associate your 2020 Account and 2020 Connect credentials.

Your username will appear in the top right of the 2020 Fusion Live interface.



## How the cloud-based license works

Following a 2020 Cloud sign-in, 2020 Fusion Live acquires a license via the Internet and then loads the application.

- When you close 2020 Fusion Live without signing out, your license remains assigned to your computer.
- When you sign out, your license is released and returns to 2020 Cloud.
- Sign out if you want to use 2020 Fusion Live on another computer.
- If a cloud license is assigned to your computer and you disconnect your computer from the internet, the cloud license remains valid for 7 days.
- Do not sign out if you think you will not have access to the Internet within the next 7 days (maximum allowed). After 7 days, an internet connection is required to access the software.

# 2020 Fusion Live

How to contact our support team:



+44 (0) 1233 635566



[fusionsupport@2020spaces.com](mailto:fusionsupport@2020spaces.com)



[2020spaces.com/2020fusionlive](https://2020spaces.com/2020fusionlive)

Want to learn more?

[Knowledge Center](#)

[Community Forum](#)

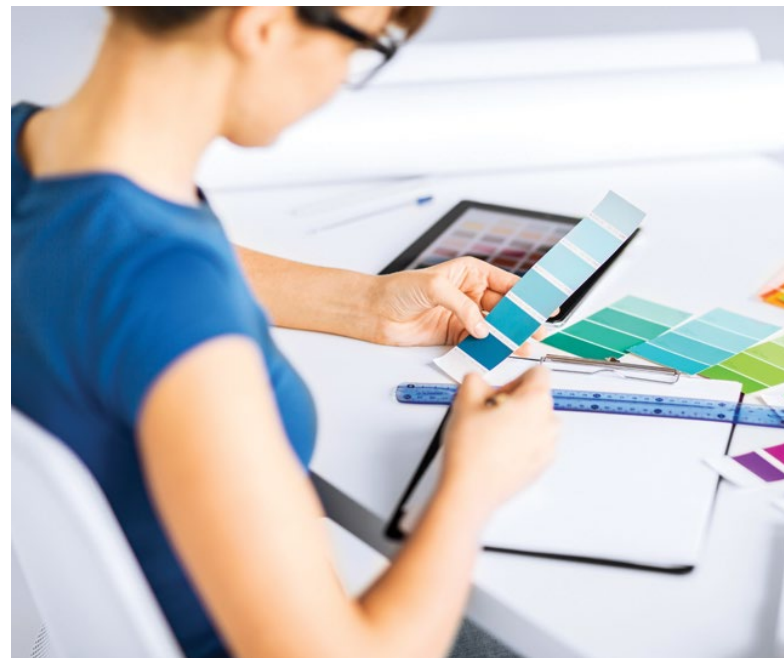
[Training](#)





## About 2020

2020 helps professional designers, retailers and manufacturers in the interior design and furniture industries capture ideas, inspire innovation and streamline processes. By providing end-to-end solutions and the world's largest collection of manufacturers' catalogs, 2020 provides businesses with the software and content to be more efficient, integrated and productive.



## Professional

Enabling professional designers to create kitchens, bathrooms, closets and commercial offices which look as stunning on the screen as they will in reality.



## Manufacturing

Providing furniture and cabinet manufacturers a complete manufacturing operations management capability developed to meet their needs.



## Retail

Empowering interior home improvement retailers to inspire the imagination of their customers and accelerate decision making.

## 2020 Headquarters

### 20-20 Technologies, Inc.

400 Armand-Frappier Blvd.  
Suite 2020  
Laval, QC Canada H7V 4B4

## Worldwide Offices

### Americas

Laval, QC, Canada  
Cary, NC, USA  
Westwood, MA, USA  
Grand Rapids, MI, USA  
Bento Gonçalves, Brazil  
Belo Horizonte, Brazil  
Caxias Do Sul, Brazil  
Curitiba, Brazil  
São Paulo, Brazil  
Salvador, Brazil

### Asia-Pacific

Guangzhou, China  
Shanghai, China  
Pune, India

### Europe

Wiener Neustadt, Austria  
Mouans-Sartoux, France  
Osnabrück, Germany  
Ashford, UK  
Bolton, UK